

- We are promptly informed of the defect.
- The appliance has not been altered in any way or subjected to misuse or repair by a person other than a person authorised by Holmes Products (Europe) Ltd.
- Faults that occur through normal wear and tear are not covered by this guarantee.
- No rights are given under this guarantee to a person acquiring the appliance second hand or for commercial or communal uses.
- Any repaired or replaced appliance will be guaranteed on these terms for the remaining portion of the guarantee.

THIS PRODUCT IS MANUFACTURED TO COMPLY WITH THE E.E.C. DIRECTIVES 73/23/EEC, 2004/108/EC and 98/37/EEC.

Waste electrical products should not be disposed of with Household waste. Please recycle where facilities exist.

Check on the following website for further recycling and WEEE information:

www.bionaire.com or e-mail info-europe@jardencs.com



**APPROVED**

*By Du Pasquier at 5:08 pm, May 08, 2007*

**BIONAIRE®**

**Holmes Products (Europe) Ltd  
1 Francis Grove  
London SW19 4DT  
England**

**Fax: +44 (0)20 8947 8272**

**Email: info-europe@jardencs.com**

**Website address: www.bionaire.com**

**UK - Free phone Customer Service Helpline - 0800 052 3615**



© 2007 Sunbeam Products, Inc. doing business as Jarden Consumer Solutions.  
All Rights Reserved.

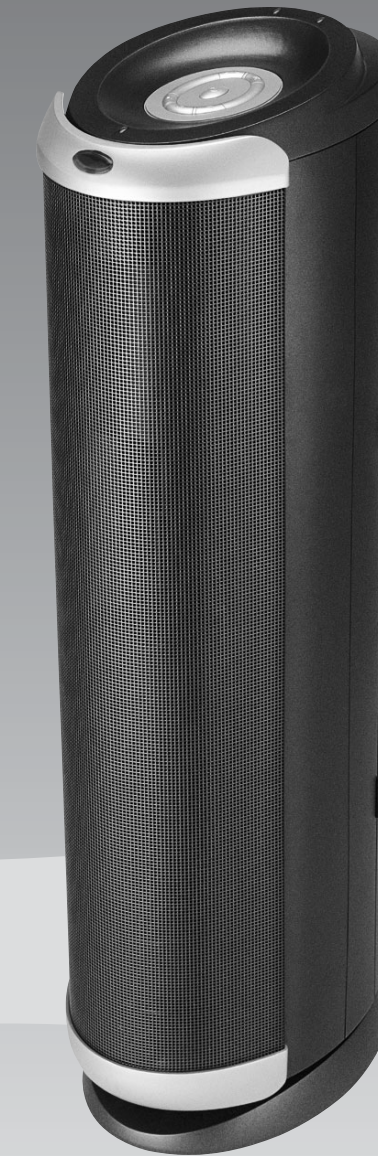
9100040002963  
BAP1550IUK07EM1

**BIONAIRE®**

**Tower Air Purifier**

**with permanent filters**

**BAP1550**



**INSTRUCTION MANUAL**

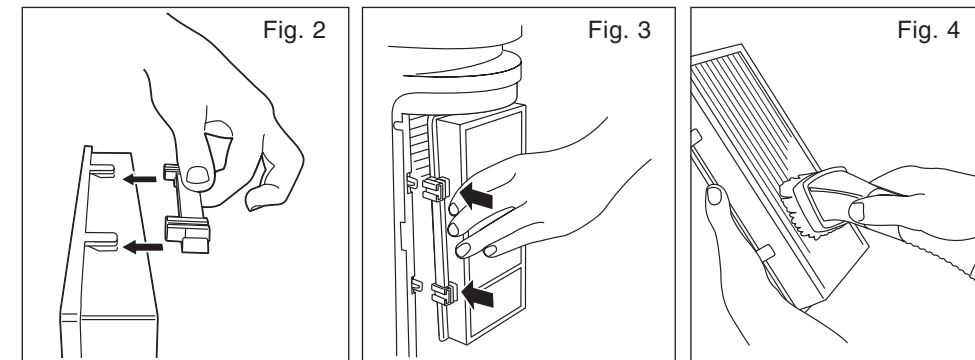
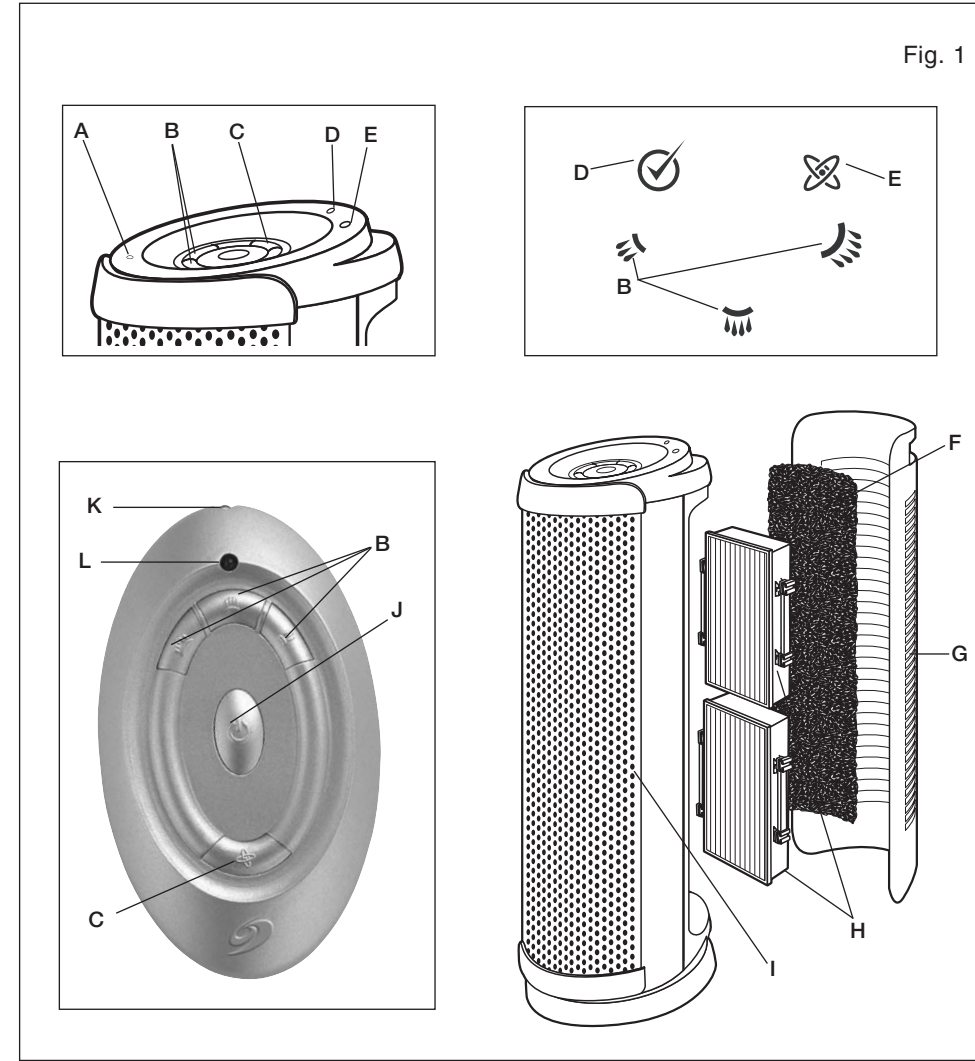


Fig. 1

**U.K. and IRELAND**

**PLEASE READ AND SAVE THESE IMPORTANT INSTRUCTIONS.**

**With proper care and use, this Bionaire® air purifier will give you fresh, clean air for many years.**

**NOTE:** Before reading these instructions, please view the corresponding illustrations.

**DESCRIPTIONS (SEE FIG. 1 & FIG. 1-A)**

- A. Power Light
- B. Speed Control
- C. Ioniser Control
- D. Filter Indicator Light
- E. Ioniser Light
- F. Washable Foam Pre-filter
- G. Inlet Grill
- H. Permanent HEPA filters (2 pcs)
- I. Filtered Air Outlet
- J. Power Button
- K. Infrared
- L. Operation Indicator Light

**SAFETY PRECAUTION**

Carefully read and retain all instructions before using the air purifier.

- To avoid fire or shock hazard, check that the voltage on the product corresponds to your electricity supply and plug directly into an electrical outlet.
- Keep cord out of heavy traffic areas and to avoid fire hazard, never put the cord under rugs, or near any heat source.
- Carefully discard any plastic wrapping that was used for the packaging. If the filter is covered by a bag when shipped, remove plastic bag before use.
- Do not use the air purifier outside.
- Do not place the unit near any heat source or in direct sunlight.
- Always unplug the air purifier before moving it, opening the grill, changing the filters, cleaning the air purifier or whenever it is not in use.
- Do not use in or around water or any other liquids. Do not attempt to wash the unit under running water.
- Use appliance only for intended household use as described in this manual.
- Ensure that all air openings are not restricted or covered in any way.
- Do not place anything on top of the unit.
- Never insert any object into any openings.
- Do not use the air purifier if any part is missing or damaged in any way.
- Do not attempt to repair or adjust any

mechanical functions of this unit. If the unit becomes damaged return to the place of purchase or phone the helpline number on the back of this leaflet.

- If the supply cord or plug is damaged, it must be replaced by the manufacturer or its service agent or a similarly qualified person in order to avoid hazard.
- The air purifier contains no user serviceable parts and should the product suffer damage or breakdown it must be returned to the manufacturer or its service agent.
- Should the air purifier stop working, first check the fuse in the plug (UK only) or fuse/circuit breaker at the distribution board is operating, before contacting the manufacturer or service agent.
- The ioniser may cause a static charge to build up on the air output grill. A static charge may be felt if the unit is not properly grounded. To avoid a static charge, plug the unit into a grounded outlet, or properly install a ground adaptor. The static shock will not occur if the ioniser is off.
- This appliance is not intended for use by persons (including children) with reduced physical, sensory or mental capabilities, or lack of experience and knowledge, unless they have been given supervision or instruction concerning use of the appliance by a person responsible for their safety. Children should be supervised to ensure that they do not play with the appliance.

**HOW THE AIR PURIFIER WORKS**

Dirty, dust laden air is drawn through the back of the air purifier and through the multi-stage filtration system.

The permanent HEPA filter entraps 99% of all smaller visible and non-visible particles down to 2 microns in size.

**IONISER**

Your Bionaire® Air Purifier has an independently controlled ioniser, which when turned on, releases negative ions into the outgoing filtered air. Ions are tiny particles that carry either a positive or negative charge. These ions exist naturally all around us in the air, water and ground. Both positive and negative ions are colourless, odourless and completely harmless.

Negative ions help the air purification process by attaching themselves to very small airborne particles in the room. These particles take on a negative charge and may join with positively charged particles, such as dust, pollen, smoke and pet dander to form larger particles that are then more readily captured by the filter system, or they may be attracted to positively charged surfaces like walls or floors.

You may also note, after extended use, that dust may have collected around the grills or front panel. This is from the ionisation effect caused by the

negative ions exiting from the air outlet. This dust does not come from the air output, but is drawn out of the uncleaned air going past the air outlet.

This is additional evidence of the air cleaning effectiveness of negative ions. The dust can be easily removed with a clean, dampened cloth or soft brush.

**NOTE:** It is important to clean the permanent HEPA filters at recommended intervals. Using the ioniser in conjunction with dirty filters may result in dirty particles exiting the air purifier and being attracted to walls, carpets, furniture and other household objects. These dirty particles may prove very difficult to remove.

**PRE-OPERATING INSTRUCTIONS**

1. After removing the unit from the box, remove the plastic covering from the unit.
2. Select a firm level place where there are no obstructions to the air inlet (rear grill) or filtered air outlet.
3. Remove the inlet grill by pulling the grill towards you.
4. Remove both permanent HEPA filters by gripping on both sides and pulling forward.
5. The filter clip can only be attached to the hang tabs on the filter one way (see Fig. 2). The filter clip should easily slide onto the filter hang tabs. Do not use force whilst attaching the filter clip to the filter. Align the clip on the permanent HEPA filter with the rails on the inside of the unit. (see Fig. 3)

**NOTE:** The pleated material and rubber gasket should be facing towards the unit when applied.

6. Replace the inlet grill by sliding back on to the unit. Make sure that it snaps securely into position (the grill only goes on one way).

**NOTE:** Do not point outlet towards wall.

**OPERATING INSTRUCTIONS**

Your remote control requires (2) AAA batteries (not included) for operation. To install the batteries, simply depress and slide the back of the remote control with your thumb on the arrow indentation. Insert batteries according to the diagram shown inside and replace cover. Remove batteries before discarding the remote control.

- DO NOT mix old and new batteries.
- DO NOT mix alkaline, standard (carbon-zinc) or rechargeable (nickel-cadmium) batteries.

1. Plug into a suitable electrical outlet.
2. Press the power button (⏻) on the control panel or the remote control. The unit will turn on high only the first time the unit is turned on. All other times it is turned on, the unit remembers the last speed selected and will turn on at that speed, and the power light will illuminate letting you know the power is on.

3. You can then select the desired speed setting. This air cleaner has three speed settings. You can select from HIGH (⏻),

MEDIUM (⏻), or LOW (⏻) by pushing the desired operating speed button on the control panel or the remote control.

4. To release negative ions into the filtered air, press the ioniser button (⏻) to either on the control panel or the remote control and the light will illuminate.
5. The ioniser will not work unless the unit is running.
6. For optimum air filtration, it is recommended to operate the air purifier continuously. Its rugged motor is designed to give many years of service.
7. For continuous use it is recommended to operate the air purifier at the Medium (⏻) setting. For quieter operation or use in a bedroom, select the Low (⏻) setting. When high levels of air pollution are present, select the HI (⏻) setting to quickly circulate clean filtered air.

**CLEANING AND MAINTENANCE**

1. Turn the air purifier off and unplug it before cleaning.
2. The outside of the air purifier can be cleaned with a soft, clean dampened cloth.
3. The rear air inlet grill can be removed and washed in warm soapy water (not dishwasher safe). Dry before replacing in the unit.
4. The filtered air outlet can be cleaned of dust with a small, soft brush.
5. If you wish to clean the inside of the air purifier, please only use a dry, soft cloth to wipe it down.

**PERMANENT HEPA FILTER CLEANING**

Filter Indicator Light (⏻) - Your air purifier has an indicator light that illuminates when it is time to clean the permanent HEPA filters.

1. Every few weeks check the condition of the pre-filter.
2. Remove the inlet grill. If the foam pre-filter has collected a noticeable amount of dust, remove it from the inlet of the grill and wash it in warm soapy water. Rinse and dry the pre-filter thoroughly before replacing it in the inlet of the grill.
3. With the inlet grill removed, check the condition of your permanent HEPA filters. If the filters are dirty, remove them by gripping on both sides and pulling forward.
4. To clean the permanent HEPA filters use a crevice tool or brush attachment with your vacuum cleaner. Run the attachment along the inlet and outlet side of the filter trying to clean between the pleated filter layers. (see Fig. 4).

**NOTE:** Vacuuming will restore performance of the permanent HEPA filter however, the filter may appear stained. This is normal and does not affect performance in any way.

**DO NOT USE WATER OR ANY OTHER HOUSEHOLD CLEANERS OR DETERGENTS TO CLEAN THE PERMANENT HEPA FILTERS.**

5. This model utilises a hang tab and filter clips to insure that the filter is properly in place. Before replacing the permanent HEPA filter make sure that the hang tab is securely in place.
6. Align the clips on the side of your permanent HEPA filter with the rails on the inside of the unit. Gently slide the filter onto the rails.
7. The filter clip should easily slide onto the filter hang tabs. Do not use force while attaching the filter clip to the filter. Align the clip on the side of your permanent HEPA filter with the rails on the inside of the unit. (see Fig. 2 and 3)
8. Replace the inlet grill by sliding back on to the unit. Make sure that it snaps securely into position (the grill only goes on one way).
9. The filter life indicator (⏻) must be reset once the permanent filters have been cleaned. Reset indicator by pressing the power button (⏻) on the control panel for 2 seconds.

**NOTE:** The pleated material and rubber gasket should be facing towards the unit when applied.

**NOTE:** Do not point outlet towards wall.

Filter Life - The filter has been designed to never need replacement, however, it does need servicing. We recommend that under normal conditions of continuous use, the filters should be cleaned at least every 3 months to help maintain optimal performance. Should the filter become damaged during cleaning replacements are available by calling **0870 759 9000**.

**PERMANENT HEPA filter Filters (Usage: 2 pcs)**

TROUBLESHOOTING	
Problem	Solution
Unit will not operate.	Check to make sure the unit is plugged in. Check to make sure the unit is on by pressing the power button. Make sure the filters are properly installed and firmly close the door.
Decreased air flow.	If the Filter Life Indicator (⏻) is red, the permanent HEPA filter should be cleaned. Check the filter to make sure they are in good condition. Check to ensure nothing is blocking the air inlet and filtered air outlet.
Noise	Make sure filter bags are removed if present.

Holmes Products (Europe) Ltd reserves the right to change or modify any specifications without notice.

**For U.K. and Ireland only:**  
If the plug is not suitable for the socket outlets in your home, it can be removed and replaced by a plug of the correct type. Please refer to

"Installation of a plug" below.

**Installation of a plug Applicable to U.K. and Ireland.**

**WARNING - THIS APPLIANCE MUST BE EARTHED**

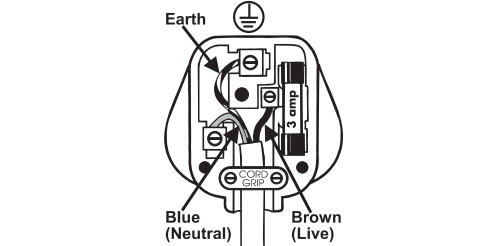
The wires in the mains lead are coloured as such:  
GREEN AND YELLOW - EARTH  
BROWN - LIVE  
BLUE - NEUTRAL

Please note that the colour of these mains wires may not correspond with the colour markings that identify the terminals in your plug.

Please proceed as follows:  
The wire which is coloured GREEN AND YELLOW must be connected to the terminal which is marked with the letter 'E' or by the earth symbol (⊕) or coloured GREEN AND YELLOW.

The BROWN coloured wire must be connected to the terminal, which is marked with the letter "L" or is coloured RED.

The BLUE coloured wire must be connected to the terminal, which is marked with the letter "N" or is coloured BLACK.



**NOTE:** If the terminals in the plug are not marked or if you are unsure or in doubt about the installation of the plug please contact a qualified electrician. If a 13A 3-pin plug is fitted, it must be an ASTA approved plug, conforming to BS1363 standard. Replacement 3A fuses must be BSI or ASTA BS1362 approved.

**GUARANTEE**  
PLEASE KEEP YOUR RECEIPT AS THIS WILL BE REQUIRED FOR ANY CLAIMS UNDER THIS GUARANTEE.

- This appliance is guaranteed for 2 years.
- In the unlikely event of breakdown from a manufacturing related fault, please return it to the place of purchase, with your till receipt and a copy of this guarantee.
- The rights and benefits under this guarantee are additional to your statutory rights which are not affected by this guarantee.
- Holmes Products (Europe) Ltd undertakes within the specified period, to repair or replace free of charge, any part of the appliance found to be defective from a manufacturing fault provided that: